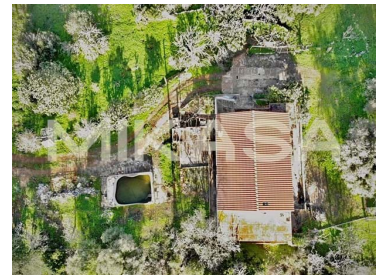




## Bensafrim e Barão de São João - Villa



**4**  
Bedrooms

**1**  
Bathrooms

**299,3**  
Area (m<sup>2</sup>)

**27480**  
Land Area (m<sup>2</sup>)

**425 000 €**  
(EUR €)

### Property in Monte Judeu with two houses for reconstruction/renovation

The property has two houses: one of them, with approximately 119 m<sup>2</sup>, is in a state of ruin and represents an excellent project for reconstruction or expansion. The second house, of type T4 and 88 m<sup>2</sup>, has the roof renovated, but needs internal remodeling, allowing you to customize the spaces according to the taste and needs of the new owner.

The land is adorned by several fruit trees, which add charm and potential for those who appreciate a natural and self-sufficient environment. The property also has a tank that was originally used as a swimming pool, and can be restored for the same purpose or adapted to other leisure or water storage functions.

In addition, the land has a water hole, which supplies the property, offering an advantage in terms of water resources and self-sufficiency. Located in a quiet region, with easy access to the center of



**Patricia Dias**

Real Estate Consultant

+351 917 145 671 <sup>2</sup> · +351 282 106 989 <sup>1</sup>

patricia.dias@mikasainvest.pt

T +351 282 106 989 <sup>1</sup> · T +351 935 632 925 <sup>2</sup> · E info@mikasainvest.pt

Rua Vitor Costa e Silva, lote 30B, Loja E  
AMI 21077

<sup>1</sup> (Call to national fixed network) | <sup>2</sup> (Call to national mobile network)



Lagos, this property is ideal for those looking for a refuge with great potential for appreciation and contact with nature.

## Property Features

- Built year: 1951
- Energetic certification: D



**Patricia Dias**

Real Estate Consultant

+351 917 145 671 <sup>2</sup> · +351 282 106 989 <sup>1</sup>

patricia.dias@mikasainvest.pt

**T +351 282 106 989 <sup>1</sup> · T +351 935 632 925 <sup>2</sup> · E info@mikasainvest.pt**

**Rua Vitor Costa e Silva, lote 30B, Loja E  
AMI 21077**

<sup>1</sup> (Call to national fixed network) | <sup>2</sup> (Call to national mobile network)