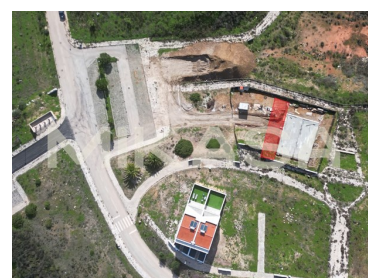
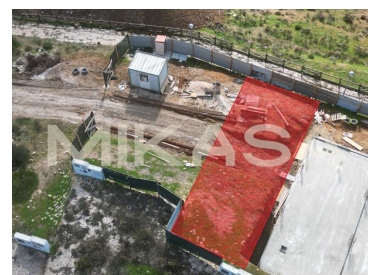




Vila do Bispo e Raposeira - Urban land



 **141,3**
Area (m²)

 **141,3**
Land Area (m²)

N/A
CLASSE
ENERGÉTICA

135 000 €
(EUR €)

Building plot Raposeira, Vila Bispo

L120

If you are a lover of nature and outdoor life, this could be your dream project. Inserted in an area of low population density, the village of Raposeira, here you can enjoy the best that the Algarve has to offer next to your new home, from beautiful beaches to hiking trails with breathtaking landscapes.

This urban plot with a total area of 141.3m² already has an approved project for the construction of a two-storey house plus basement, facing south. The projected villa has two bedrooms, an open plan living room to the kitchen, three bathrooms (two complete and one service), a 50m² basement with natural light and a 33m² patio, as well as terraces and balconies on all floors.

Situated in Altos da Raposeira, 1 km from the village centre, you can enjoy the best of both worlds:



Pedro Neves

+351 914 218 727 ² · +351 282 106 989 ¹

pedro.neves@mikasainvest.pt

T +351 282 106 989 ¹ · T +351 935 632 925 ² · E info@mikasainvest.pt

Rua Vitor Costa e Silva, lote 30B, Loja E
AMI 21077

¹ (Call to national fixed network) | ² (Call to national mobile network)



living in the tranquility of the countryside, with the city of Vila do Bispo and some of the most beautiful beaches in the county just a 5-minute drive away.

The project approved by the Municipality of Vila do Bispo allows you to save time and money in bureaucracy so that you can focus on what really matters, the construction of your future home.

The Southwest Alentejo and Vicentine Coast Natural Park, which runs from São Torpes to Burgau, is one of the most beautiful areas of the national territory, covering the municipalities of Vila do Bispo, Aljezur, Odemira and Sines.

In your daily life you can enjoy the most diverse activities, from surfing, mountain biking, hiking, bird watching or simply enjoying the beautiful landscapes of the western Algarve. Here you can find the quality of life you have always been looking for, as well as the excellent climate and cuisine.

Property Features

- Proximity: Beach, Open field
- Energetic certification: Exempt
- Views: Sea views, Countryside views
- Solar orientation: South



Pedro Neves

+351 914 218 727 ² · +351 282 106 989 ¹

pedro.neves@mikasainvest.pt

T +351 282 106 989 ¹ · T +351 935 632 925 ² · E info@mikasainvest.pt

Rua Vitor Costa e Silva, lote 30B, Loja E
AMI 21077

¹ (Call to national fixed network) | ² (Call to national mobile network)